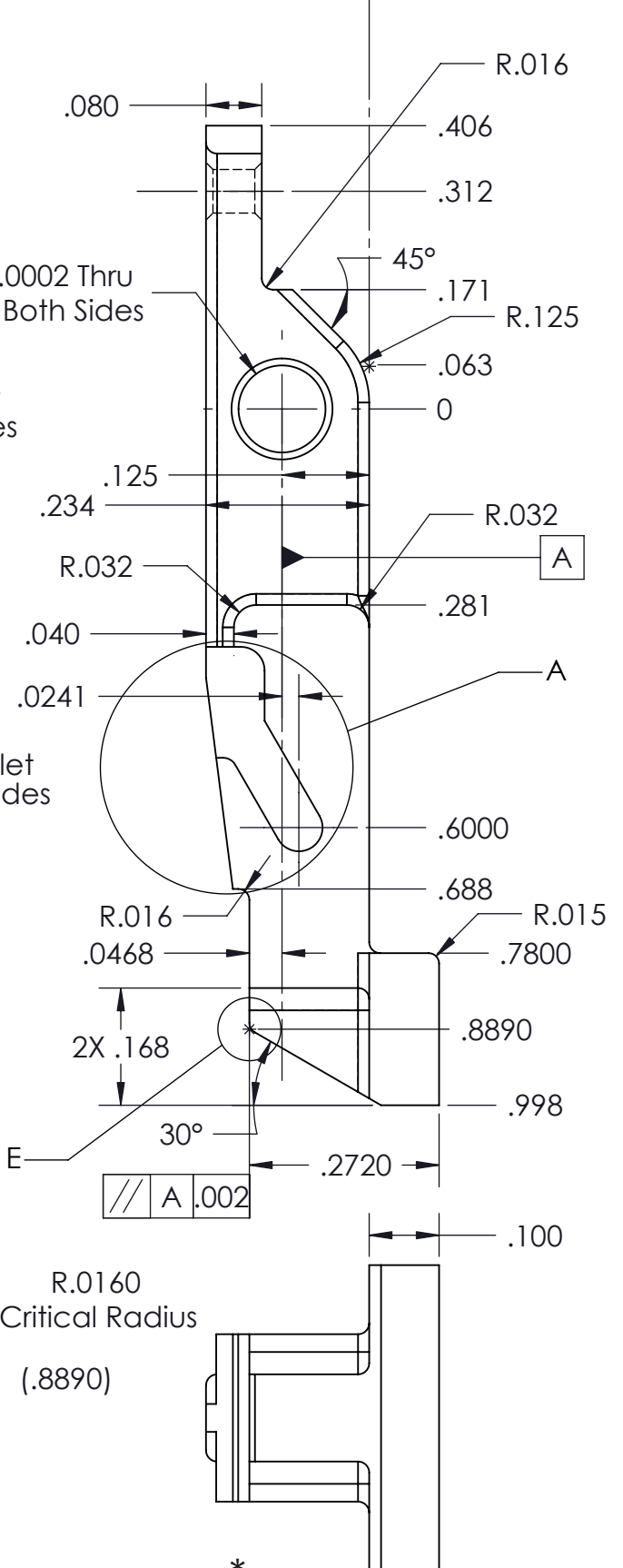
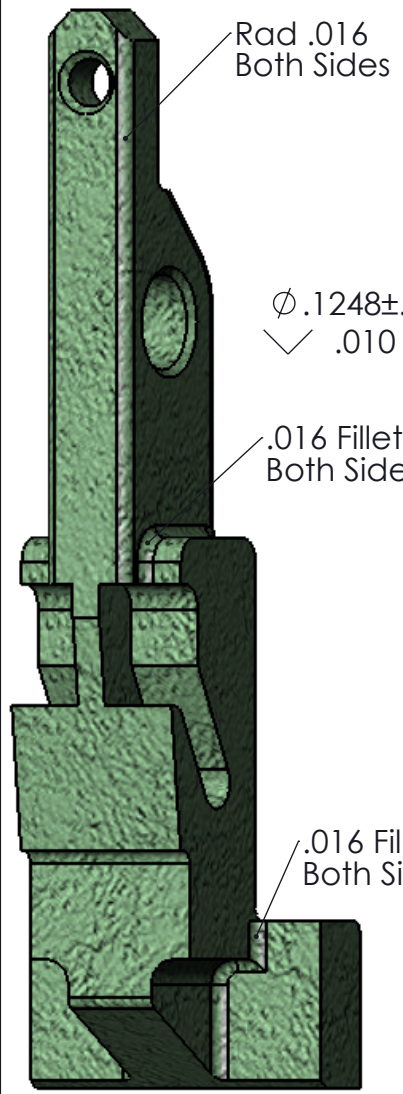
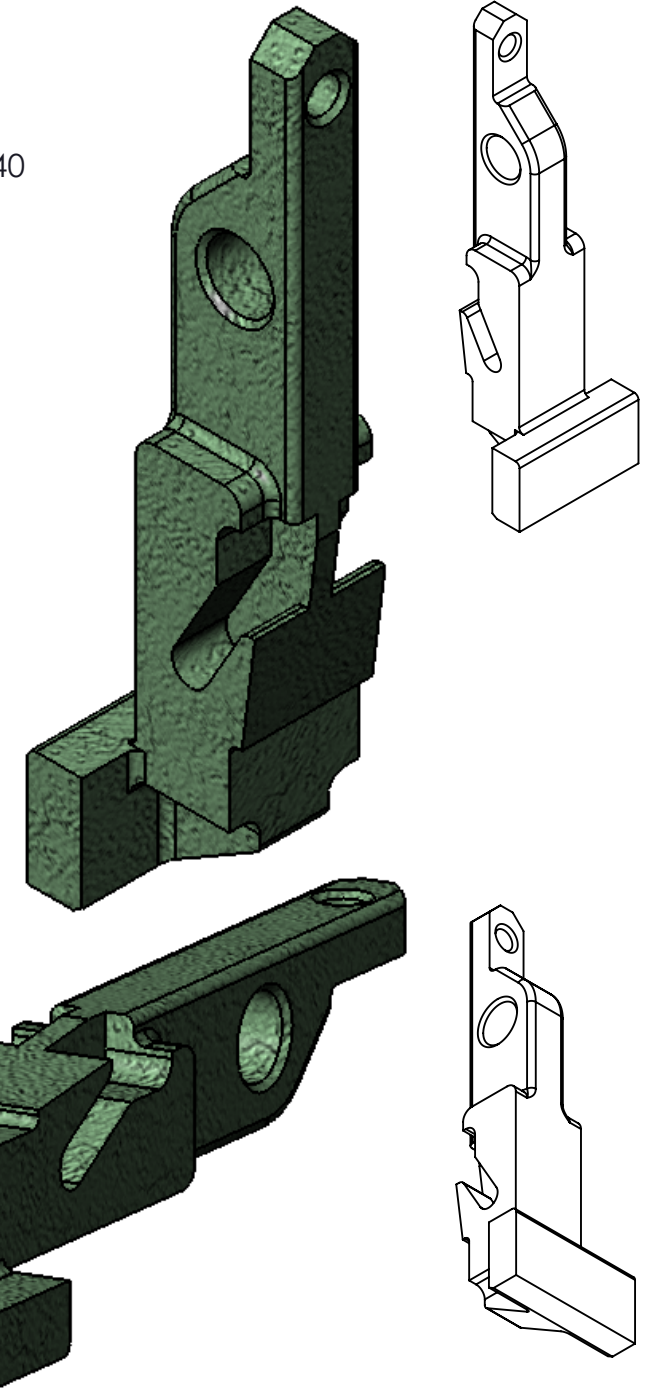
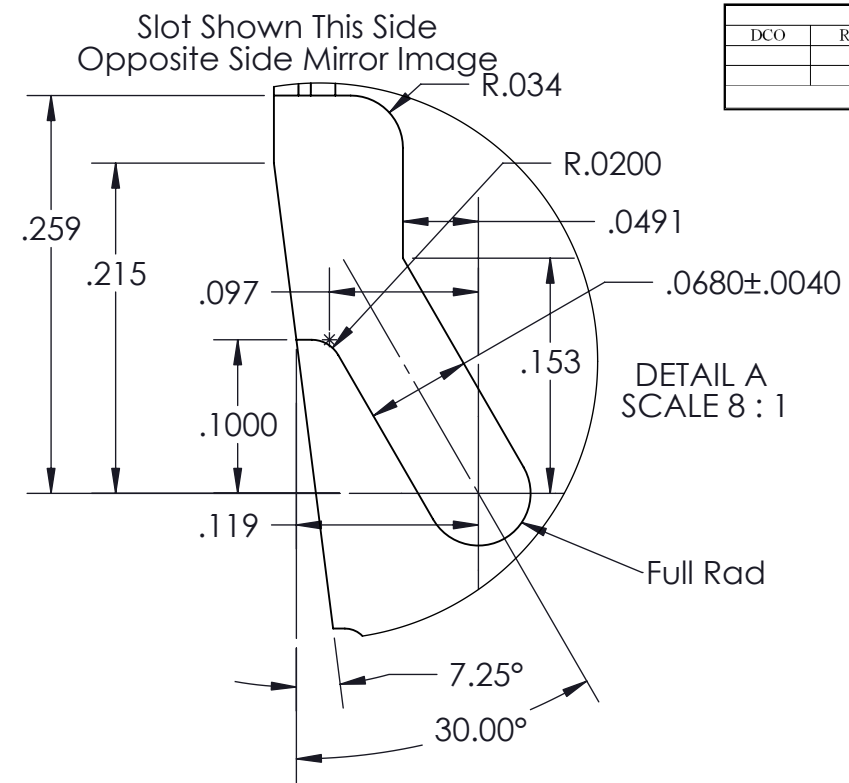
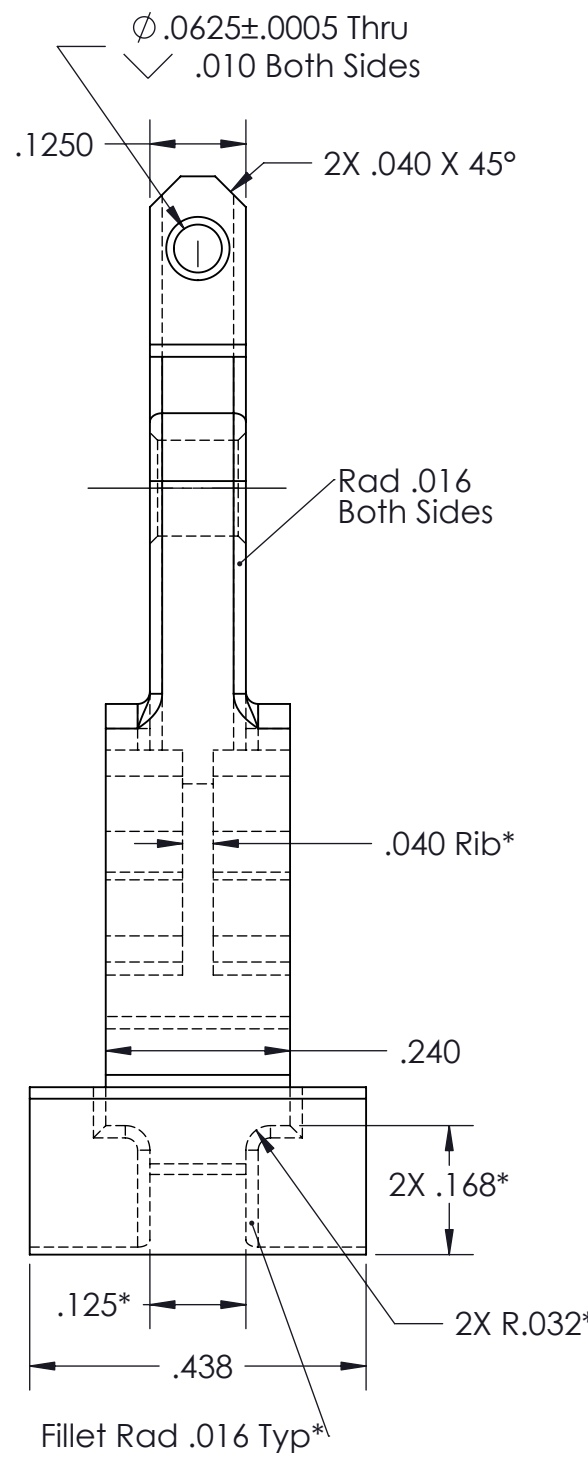


REVISIONS			DATE
DCO	REV	DESCRIPTION	



DETAIL E  
SCALE 30 : 1



6. Farside dimensions indicated by asterik \*
5. FINISH: Zinc plate per ASTM B 633-98, Type II, Black, Se/Zn 6
4. Heat Treat to 45 Rockwell.
3. REMOVE ALL BURRS AND SHARP EDGES.
2. DIMENSIONS: INCH (UNLESS OTHERWISE SPECIFIED).
1. MATERIAL: 4140 Tool Steel
- NOTES: UNLESS SHOWN OTHERWISE.

DIMENSIONAL TOLERANCE U.O.S.		
	INCH	METRIC
.X	±1/16"	±1.587mm
.XX	±.030"	±.762mm
.XXX	±.010"	±.254mm
.XXXX	±.005"	±.127mm
ANGLES ± .5°		
 3rd ANGLE PROJECTION		

TITLE			
Swing Arm			
DRAFTING	SIGNATURE	DATE	SHEET SIZE
MECH ENG	Mark Smith	10/31/06	B
ELEC ENG	SIGNATURE	DATE	DRAWING NUMBER <b>05-18-110</b>
MANUFACTURING	SIGNATURE	DATE	
OPERATIONS	SIGNATURE	DATE	REVISION <b>B</b>
SCALE: 4:1		SHEET 1 of 1	