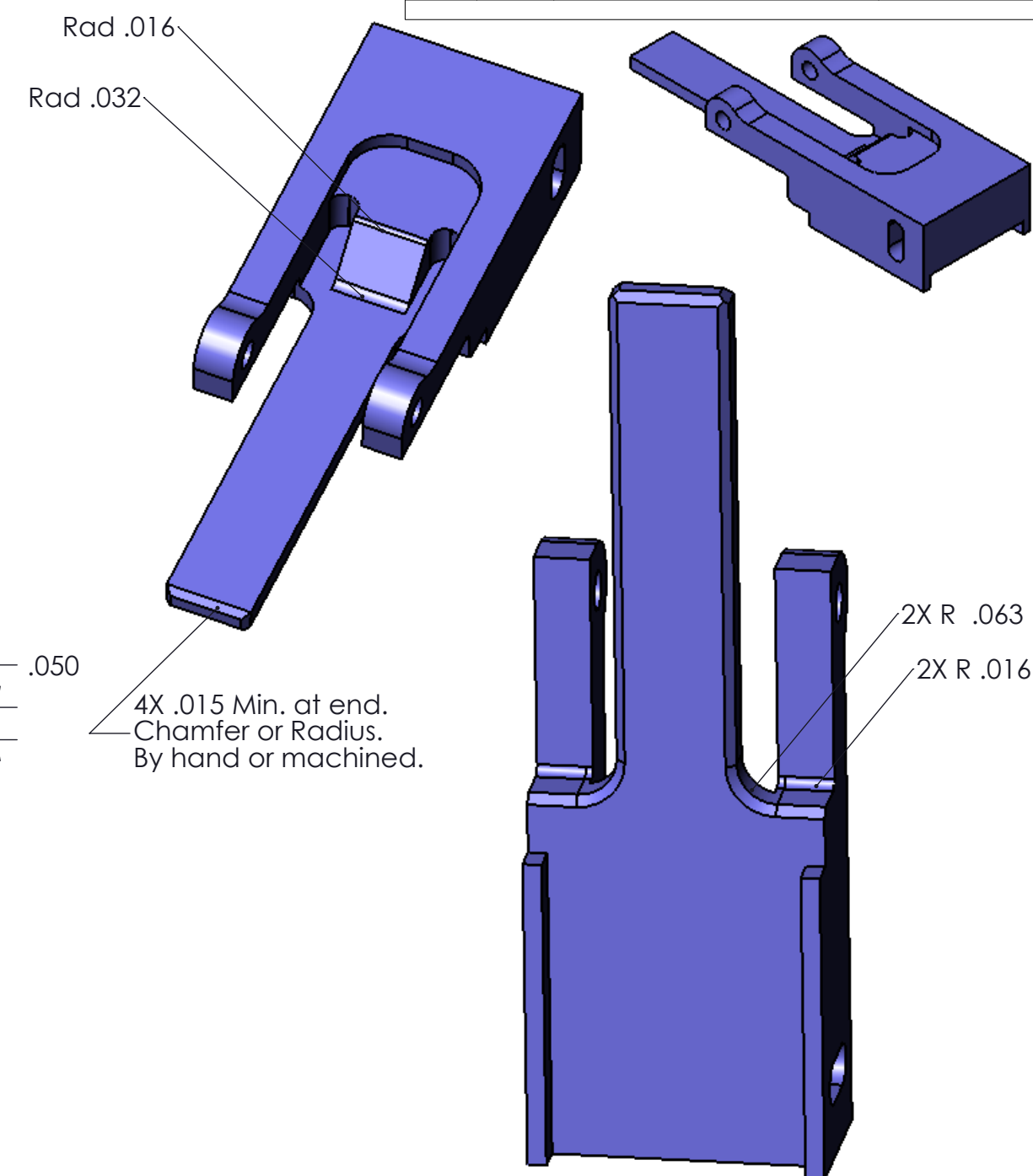
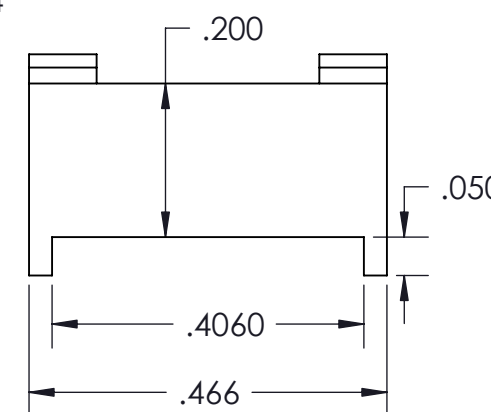
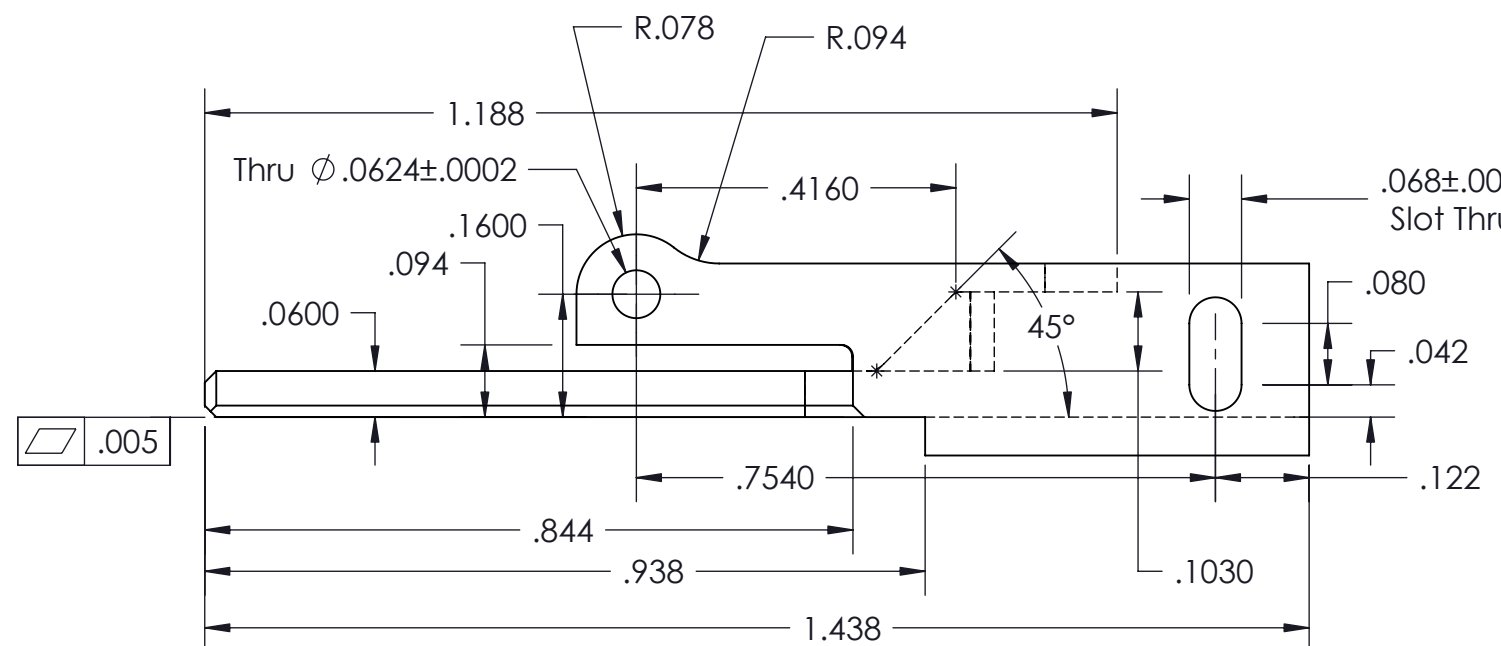
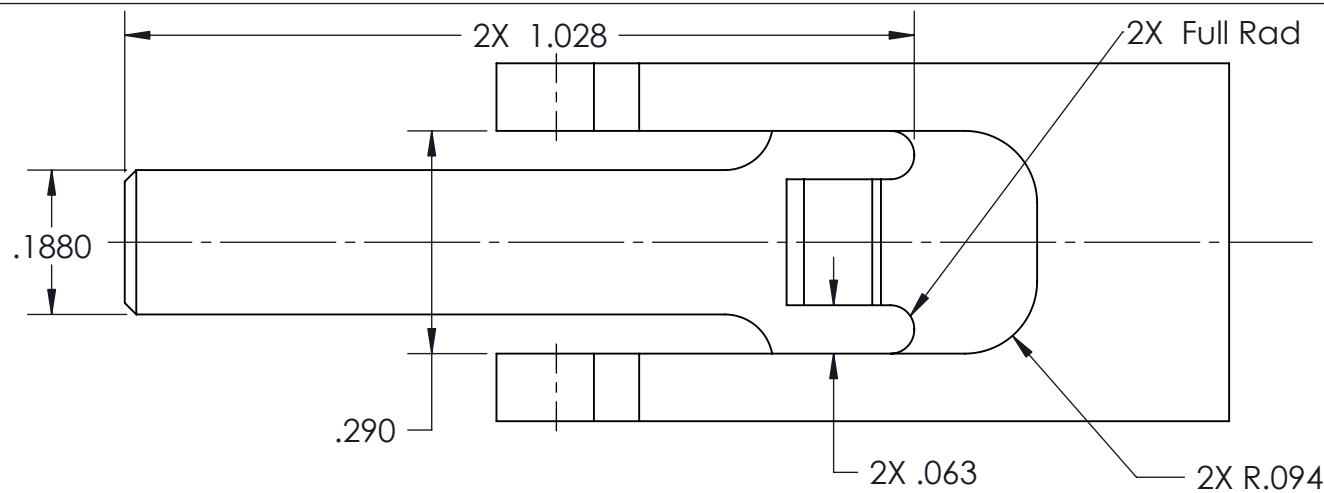
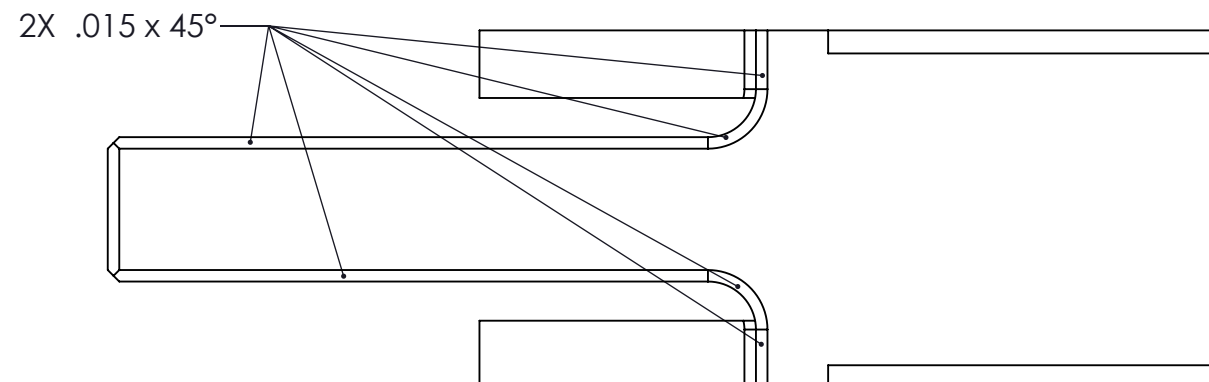


DCO		REV	REVISIONS DESCRIPTION	DATE



.005



5. FINISH: Zinc plate per ASTM B 633-98, Type II, Black, Se/Zn 6
 4. Heat Treat to 45 Rockwell.
 3. REMOVE ALL BURRS AND SHARP EDGES.
 2. DIMENSIONS: INCH (UNLESS OTHERWISE SPECIFIED).
 1. MATERIAL: 4140 Tool Steel
- NOTES: UNLESS SHOWN OTHERWISE.

DIMENSIONAL TOLERANCE U.O.S.

	INCH	METRIC
.X	$\pm 1/16"$	$\pm 1.587\text{mm}$
.XX	$\pm .030"$	$\pm .762\text{mm}$
.XXX	$\pm .010"$	$\pm .254\text{mm}$
.XXXX	$\pm .005"$	$\pm .127\text{mm}$

ANGLES $\pm .5^\circ$



			TITLE	
			Pusher, Swing Arm	
DRAFTING	SIGNATURE	DATE	SHEET SIZE	ELECTRONIC FILE NAMES
MECH ENG	Mark Smith	10/31/06		
ELEC ENG	SIGNATURE	DATE	DRAWING NUMBER	REVISION
MANUFACTURING	SIGNATURE	DATE		
OPERATIONS	SIGNATURE	DATE	05-18-109	B
SCALE: 4:1			SHEET 1 of 1	