

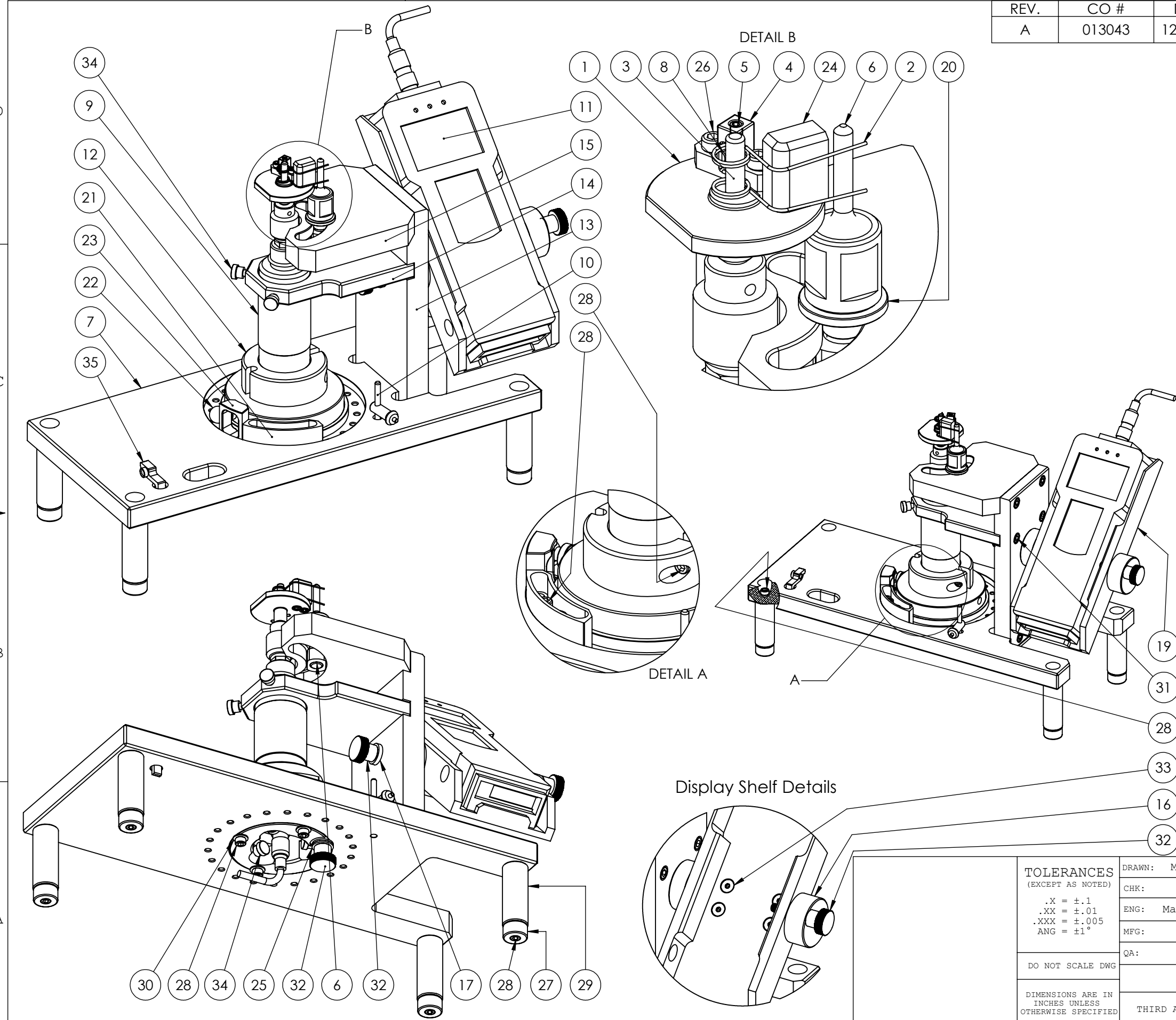
4

3

2

1

REV.	CO #	DATE	REVISION DESCRIPTION	ENGINEER
A	013043	12/17/13	Initial Release	Mark Smith



Item No.	Drawing Number	Description	Qty
1	85279	Mount, Spring	1
2	33832	Spring	1
3	97395A615	Dowel Pin Ø.188 x 1.250 (McMaster)	1
4	85280	Stop Housing	1
5	92313A143	6-32 x .188 Set Screw (McMaster)	1
6	85282	Stop, Adjustable	1
7	85283	Base Plate	1
8	85284	Stop, Spring	1
9	HTG2-4	Torque Gauge: Sensor for the HTG2-4 (Imada)	1
10	HTG2-4	Torque Gauge: Chuck Key for the HTG2-4 (Imada)	2
11	HTG2-4	Torque Gauge: Display Unit for the HTG2-4 (Imada)	1
12	85286	Base, Rotational	1
13	85287	Support Brace	1
14	85288	Support, Upper	1
15	85289	Support, Stop	1
16	85290	Support, Display Shelf	1
17	98029A029	.250 Washer, Thick (McMaster)	1
18	85291	Stop, Slot Nut	1
19	85292	Shelf, Display	1
20	85293	Washer, Special	1
21	85294	Stop, Radius	1
22	8481A35	Tooling Ball (McMaster)	1
23	85295	Gauge, Radius Set	2
24	85296	Guide, Spring Insertion	1
25	90107A029	.250 Washer (McMaster)	2
26	91251A146	6-32 x .375 SHCS (McMaster)	4
27	9540K46	Foot, Rubber (McMaster)	4
28	91251A245	10-24 x .750 SHCS (McMaster)	15
29	85297	Leg	4
30	90107A011	#10 Washer (McMaster)	4
31	91251A542	.250-20 x 1 SHCS (McMaster)	6
32	5125K62	Knob (McMaster)	3
33	91263A531	10-24 x .375 Flat SHCS (McMaster)	4
34	94323A611	Thumb Screw, Knurled (McMaster)	5
35	85225	Setting Gauge, Spring Torque Fixture	1

<b>TOLERANCES</b> (EXCEPT AS NOTED) .X = ±.1 .XX = ±.01 .XXX = ±.005 ANG = ±1°	DRAWN: Mark Smith 2/10/14	PART IS LISTED IN UL FILE: <b>NO</b>
	CHK: ENG: Mark Smith 8/14/12 MFG: QA:	
DO NOT SCALE DWG DIMENSIONS ARE IN INCHES UNLESS OTHERWISE SPECIFIED	THIRD ANGLE PROJECTION	SIZE: B DR #: 85278 REVISION: A SCALE: 1:3 SHEET: 1 OF 1

4

3

2

1