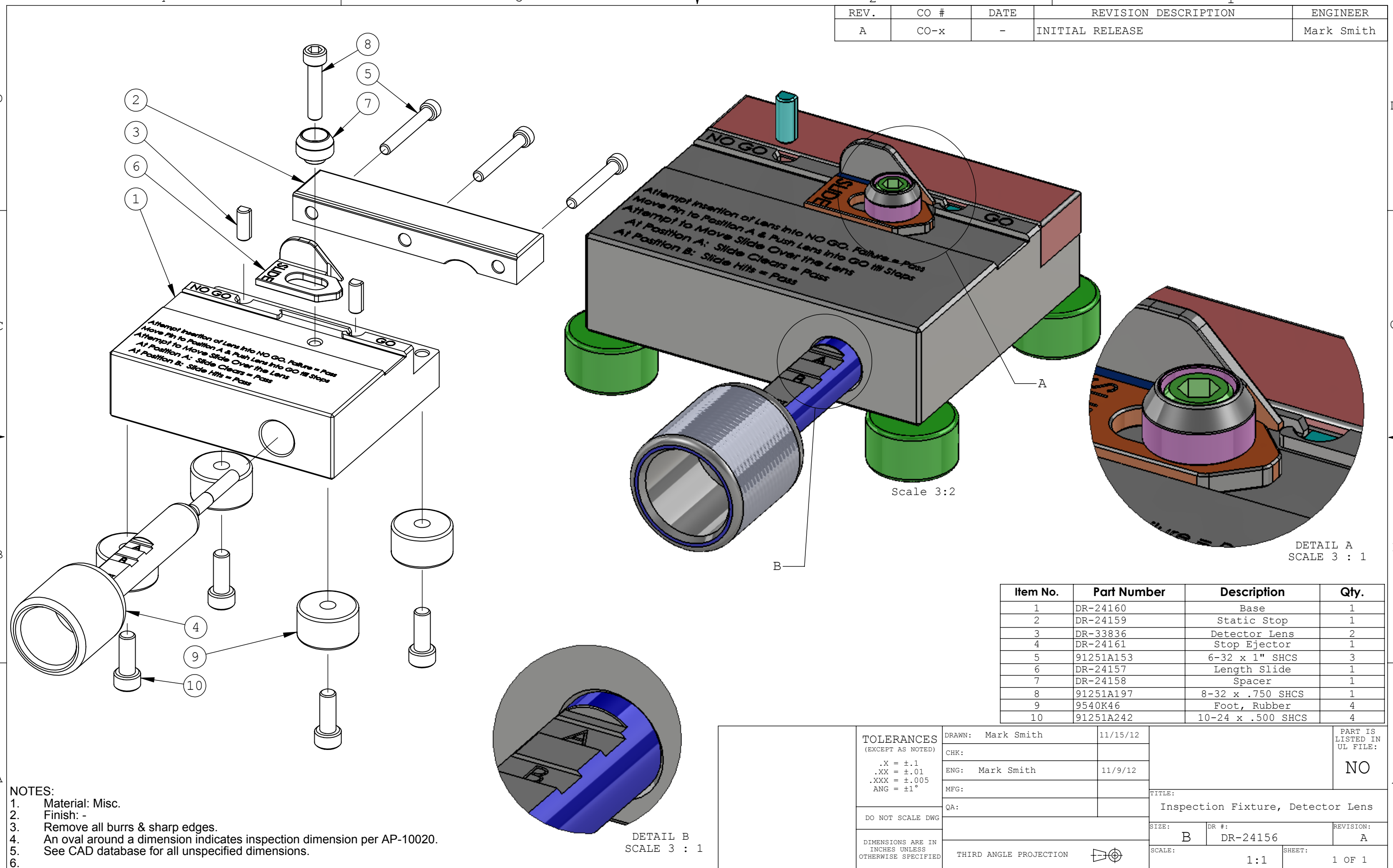


REV.	CO #	DATE	REVISION DESCRIPTION	ENGINEER
A	CO-x	-	INITIAL RELEASE	Mark Smith



- NOTES:
1. Material: Misc.
 2. Finish: -
 3. Remove all burrs & sharp edges.
 4. An oval around a dimension indicates inspection dimension per AP-10020.
 5. See CAD database for all unspecified dimensions.
 - 6.

Item No.	Part Number	Description	Qty.
1	DR-24160	Base	1
2	DR-24159	Static Stop	1
3	DR-33836	Detector Lens	2
4	DR-24161	Stop Ejector	1
5	91251A153	6-32 x 1" SHCS	3
6	DR-24157	Length Slide	1
7	DR-24158	Spacer	1
8	91251A197	8-32 x .750 SHCS	1
9	9540K46	Foot, Rubber	4
10	91251A242	10-24 x .500 SHCS	4

TOLERANCES (EXCEPT AS NOTED) .X = ±.1 .XX = ±.01 .XXX = ±.005 ANG = ±1°	DRAWN: Mark Smith	11/15/12	PART IS LISTED IN UL FILE: NO
	CHK:		
DO NOT SCALE DWG	ENG: Mark Smith	11/9/12	TITLE: Inspection Fixture, Detector Lens
	MFG:		
DIMENSIONS ARE IN INCHES UNLESS OTHERWISE SPECIFIED	QA:		SIZE: B
	THIRD ANGLE PROJECTION		DR #: DR-24156
			REVISION: A
			SCALE: 1:1
			SHEET: 1 OF 1