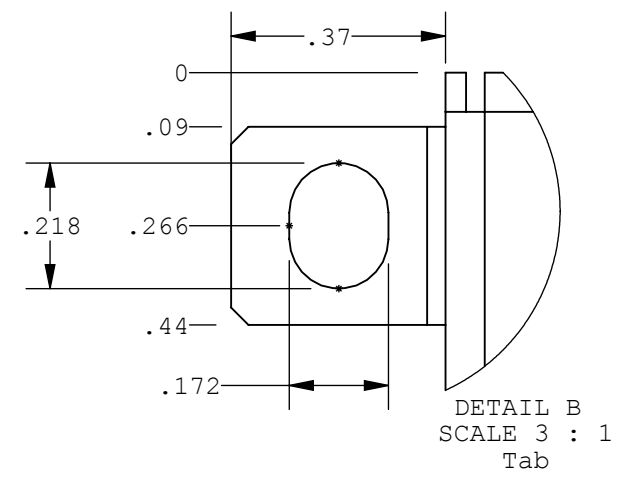
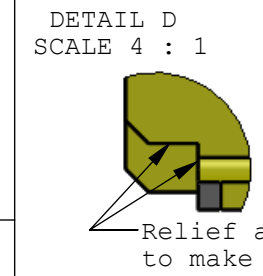
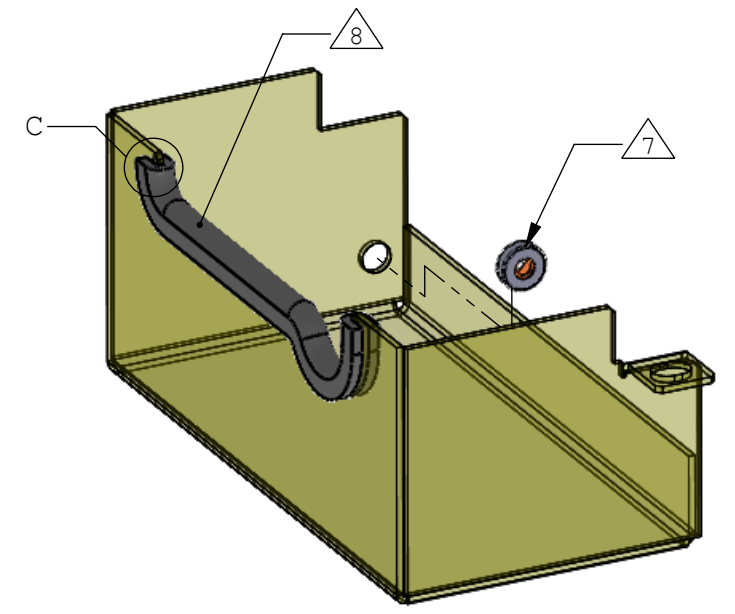
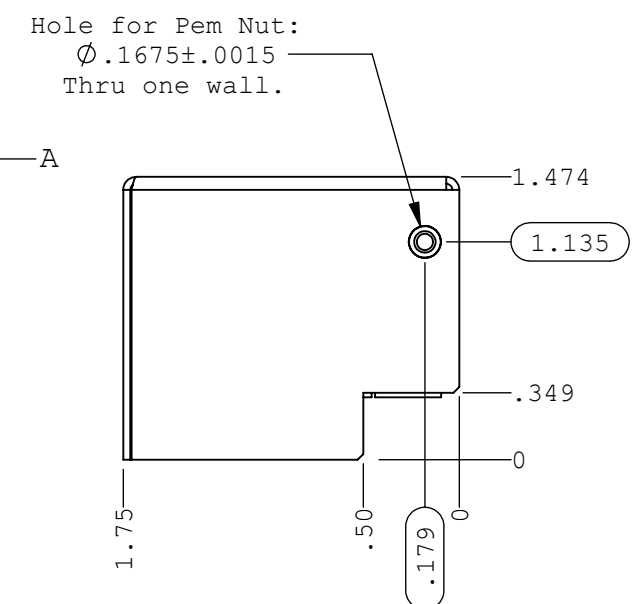
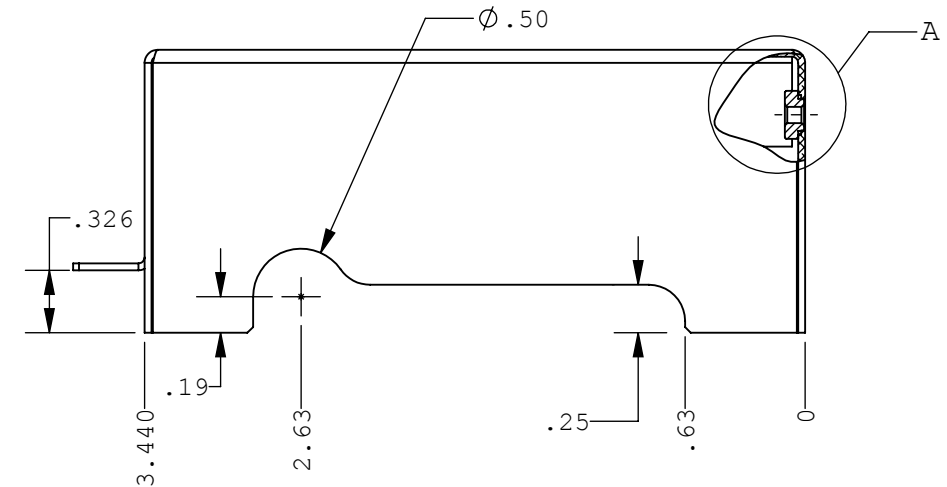
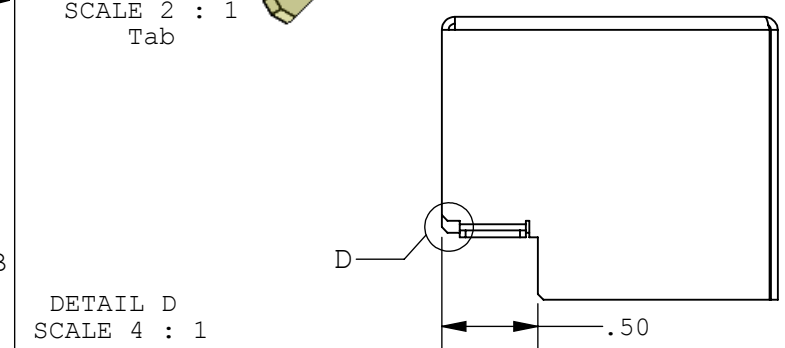
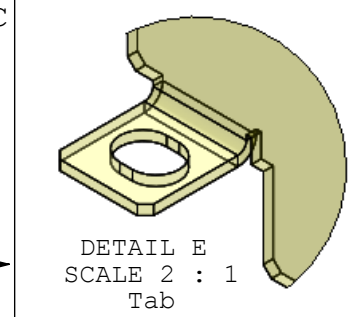
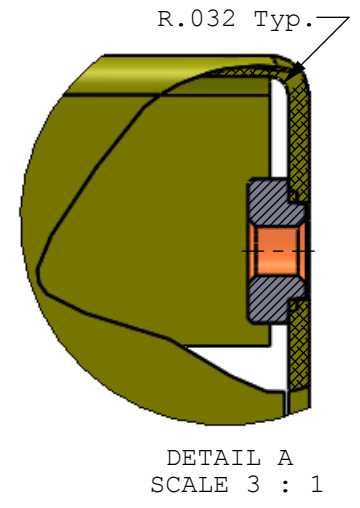
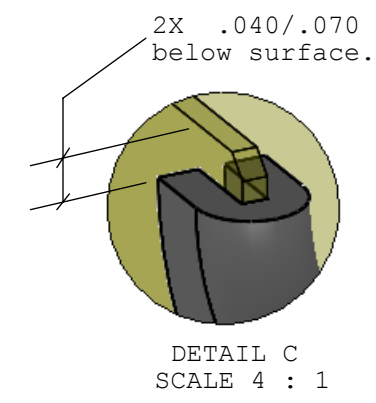
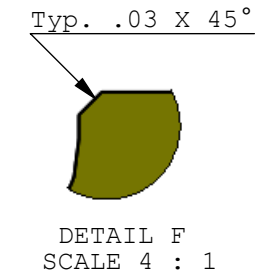
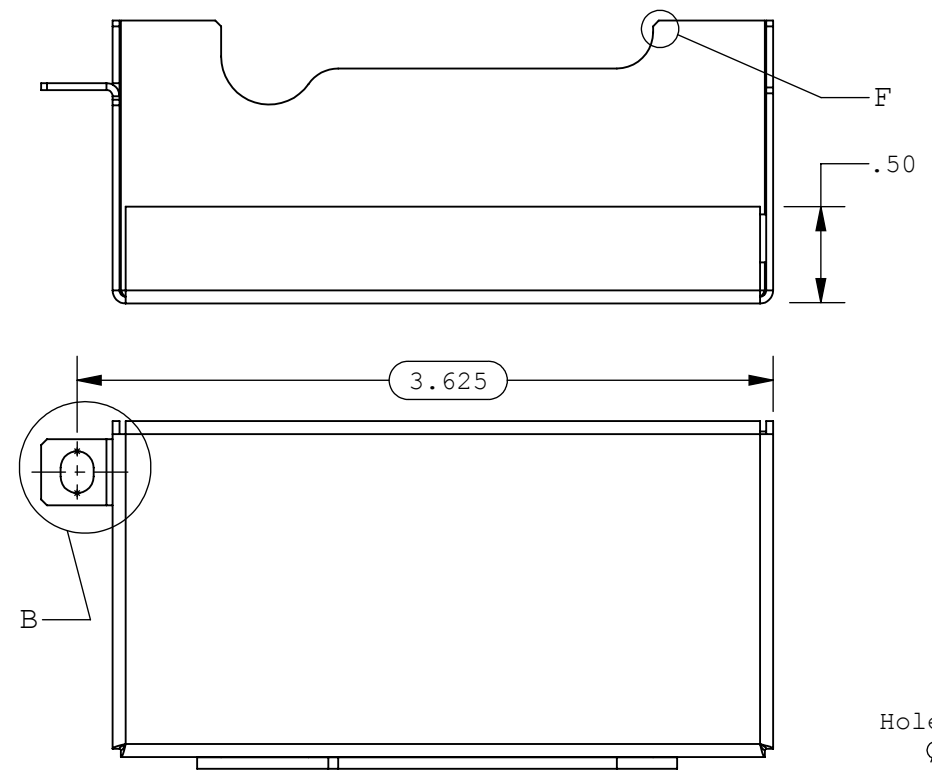
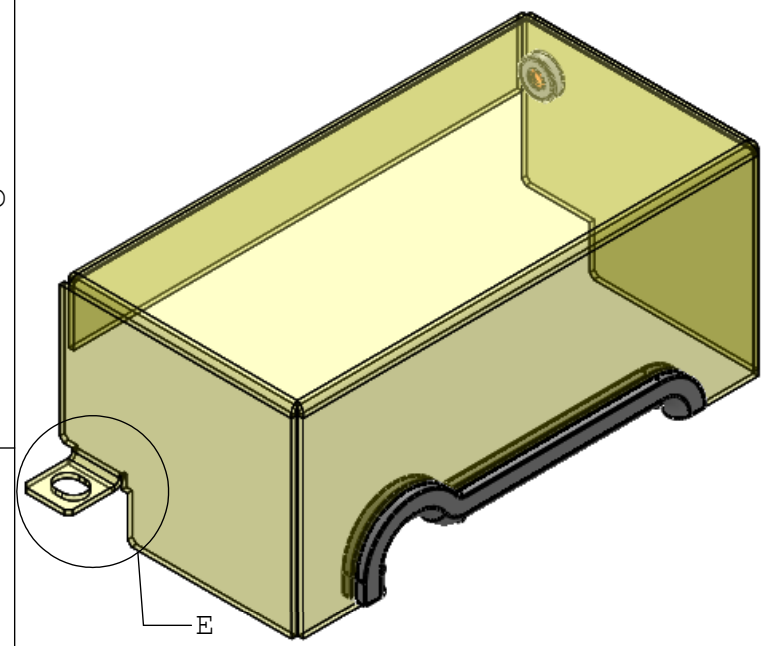


REV.	CO #	DATE	REVISION DESCRIPTION	ENGINEER
A	012780	12/2/13	INITIAL RELEASE	Mark Smith



Item No.	Part Number	Description	Qty.
1	85216_Pre-PemNut	Pre-PemNut Electrical Cover	1
2	CLS-440-0	Pem Nut, 4-40	1
3	8507K61	Edge Trim (McMaster), Rubber	A/R

- NOTES:
- Material: 20 gauge cold-rolled steel sheet, per ASTM-A1008
  - Finish: Zinc Plate, Black Chromate per ASTM B633-11, Type II, Black
  - Remove all burrs & sharp edges.
  - An oval around a dimension indicates inspection dimension per AP-10020.
  - See CAD database for all unspecified dimensions, contours, shapes etc.
  - Interpret all dimensions & tolerances per ASME Y14.5M-1994.

- Press-fit Pem Nut (Item 2) into hole as shown.
- Install Edge Trim (Item 3) onto edge, as shown.

TOLERANCES (EXCEPT AS NOTED) .X = ±.1 .XX = ±.01 .XXX = ±.005 ANG = ±1°	DRAWN: Mark Smith	11/25/13	PART IS LISTED IN UL FILE: <b>NO</b>
	CHK:		
DO NOT SCALE DWG	ENG: Mark Smith	11/25/13	TITLE: Cover, Electrical
	MFG:		
DIMENSIONS ARE IN INCHES UNLESS OTHERWISE SPECIFIED	QA:		SIZE: B
	THIRD ANGLE PROJECTION		DR #: 85216
			REVISION: A
		SCALE: 1:1	SHEET: 1 OF 1