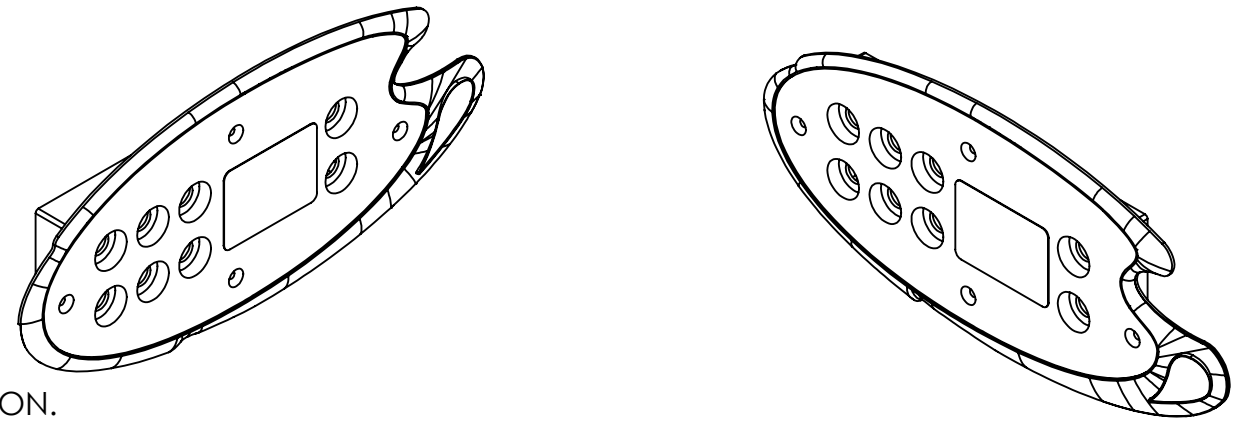
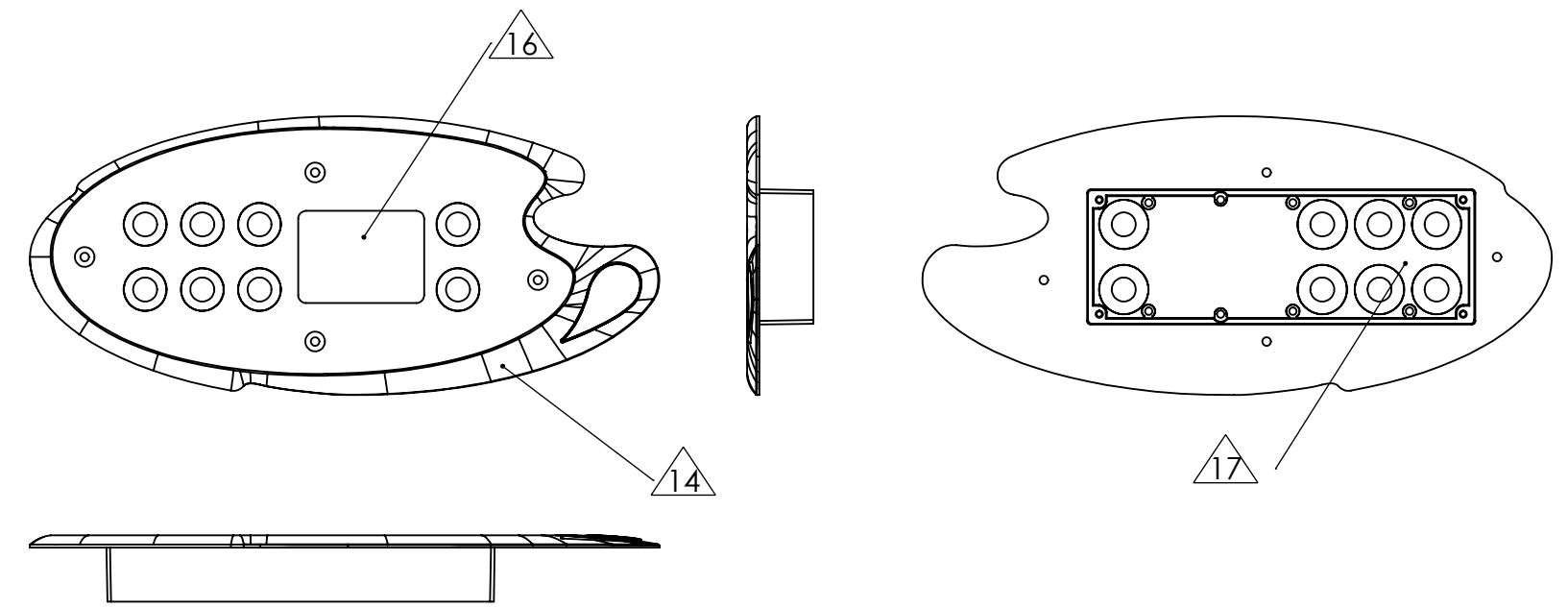


REVISIONS					
ZONE	REV.	DESCRIPTION	ECO	BY	DATE



1. MAKE PART FEATURES PER SUPPLIED .IGS FILE.
2. MOLD DESIGN TO BE APPROVED PRIOR TO MOLD FABRICATION.
3. FLASH ALONG PARTING LINE(S) AND OPENINGS TO BE .005 MAX.
4. GATES TO BE FLUSH TO .005 ABOVE SURFACE.
5. ALL DIMENSIONS APPLY AFTER DRAFT.
6. INSIDE CORNER RADII = .020
7. SINK HOLES NOT PERMITTED.
8. PART TO BE FREE OF OIL, GREASE, AND FOREIGN MATTER.
9. CERTIFICATE OF CONFORMANCE REQUIRED.
10. DRAFT ANGLE: 2° PER SIDE MAX.
11. EJECTOR PIN MARKS TO BE FLUSH TO .020" BELOW SURFACE.
12. WALL THICKNESS: .080" - .120"



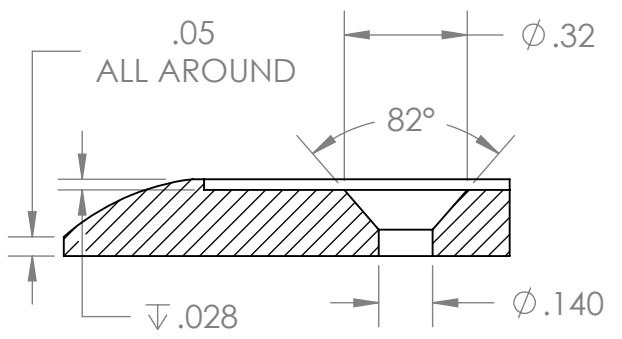
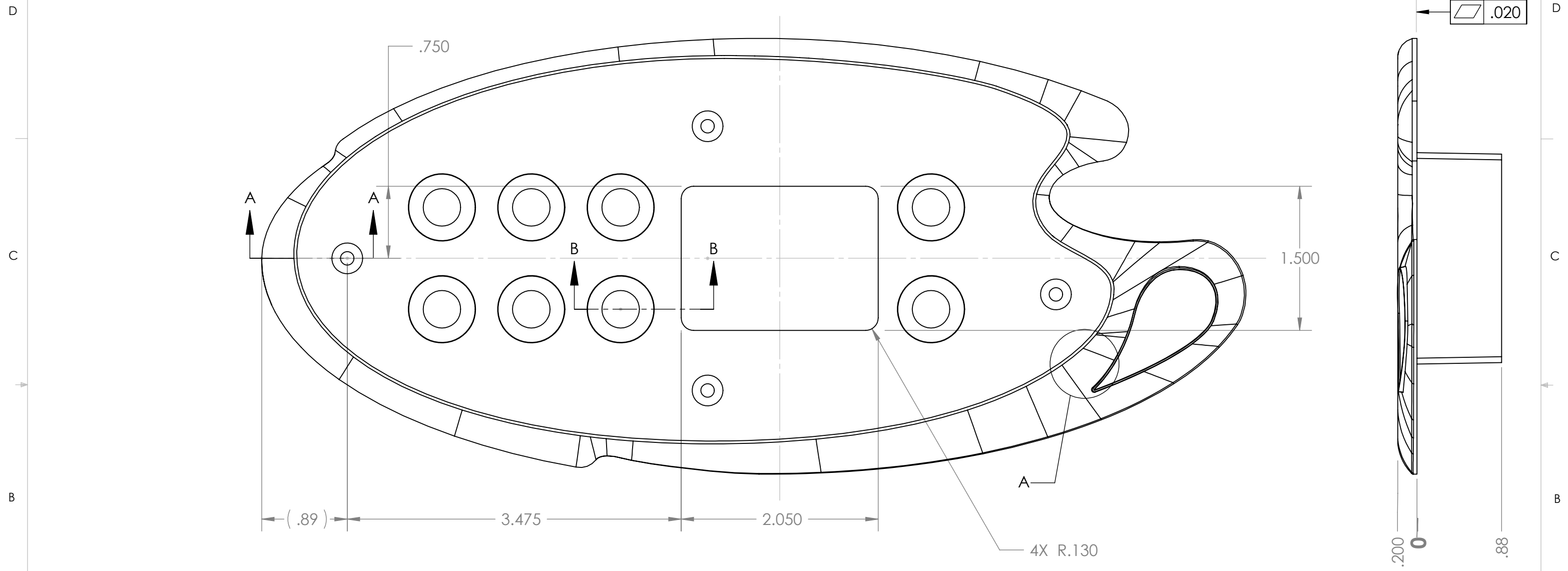
13. MATERIAL: FOR OUTDOOR APPLICATIONS MACROLON #6457 OR CLEAR LEXAN "UL" RECOGNIZED GE #143R, 923A
14. TEXTURE: BORDER FINISH (MT 1055-3) "MOLD TECH" SPEC'S, OR EQUIV. FROSTED FINISH.
15. COVER ENTIRE WINDOW AREA WITH "STICKER WINDOW" FOR WINDOW PROTECTION (REFER TO PRINT 10243) APPLY STICKER AFTER MOLDED PART HAS COOLED TO AMBIENT ROOM TEMPERATURE OR LESS THAN 95° F. WINDOW AREA MUST BE PROTECTED FROM MARRING OF ANY KIND DURING SHIPMENT AND HANDLING OR PARTS WILL BE REJECTED UPON RECEIPT. STICKERS PROVIDED.
16. WINDOW AREA MUST BE OPTICALLY CLEAR, NO BUBBLES OR INCLUSIONS ALLOWED. NO CONTAMINANTS OVER .005" IN DIA ALLOWED. CONTAMINANTS WHICH ARE UNDER .005" DIA WILL BE PERMISSABLE PROVIDED THERE ARE NO MORE THAN A TOTAL OF 5 (APPLIES TO BOTH SIDES OF WINDOWS). LIMIT SAMPLES PROVIDED BY BALBOA INSTRUMENTS, SHALL DEFINE THE "ACCEPTABLE" RANGE REGARDING WINDOW DISTORTION AND OTHER COSMETIC DEFECTS.
17. POSSIBLE LOCATION FOR PART NUMBER, REV. LETTER, AND VENDOR IDENTIFICATION.

NOTES: UNLESS OTHERWISE SPECIFIED

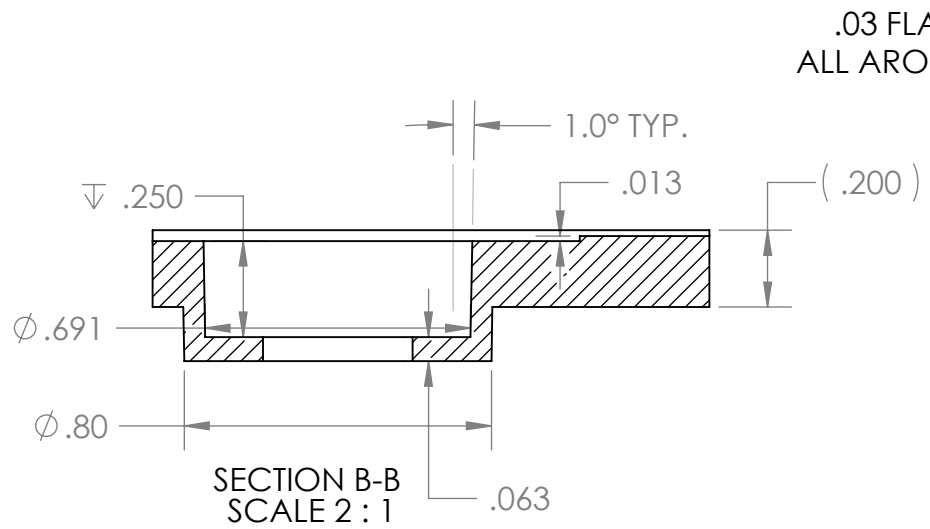
UNLESS OTHERWISE SPECIFIED:	
.xx = ± .01"	
.xxx = ± .005"	
x/x = ± 1/64"	
∠ = ± .5°	
BEND RADII 1/32"	
GD&T PER ANSI 14.5M	
 THIRD ANGLE PROJECTION	
MATERIAL	13
FINISH	14

NAME	DATE	TITLE: <b>PANEL COAST</b>
DRAWN Mark Smith	1/14/08	
ENG APPR.		
MFG APPR.		
Q.A.		SIZE DWG. NO. REV <b>B</b> 54744 <b>A</b>
COMMENTS:		
DO NOT SCALE DRAWING		SCALE: 1:1 FILE: 54744_A SHEET 1 OF 4

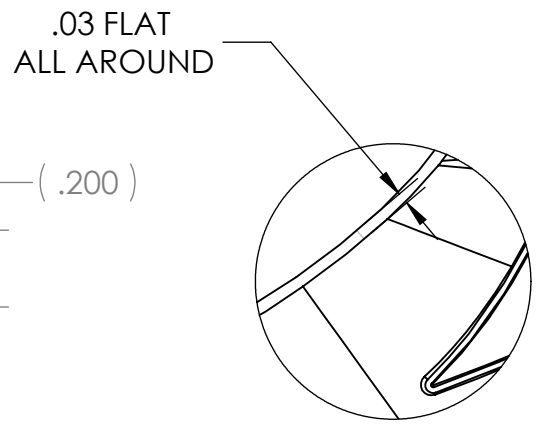
8 7 6 5 4 3 2 1



SECTION A-A  
SCALE 2 : 1  
4 PLACES

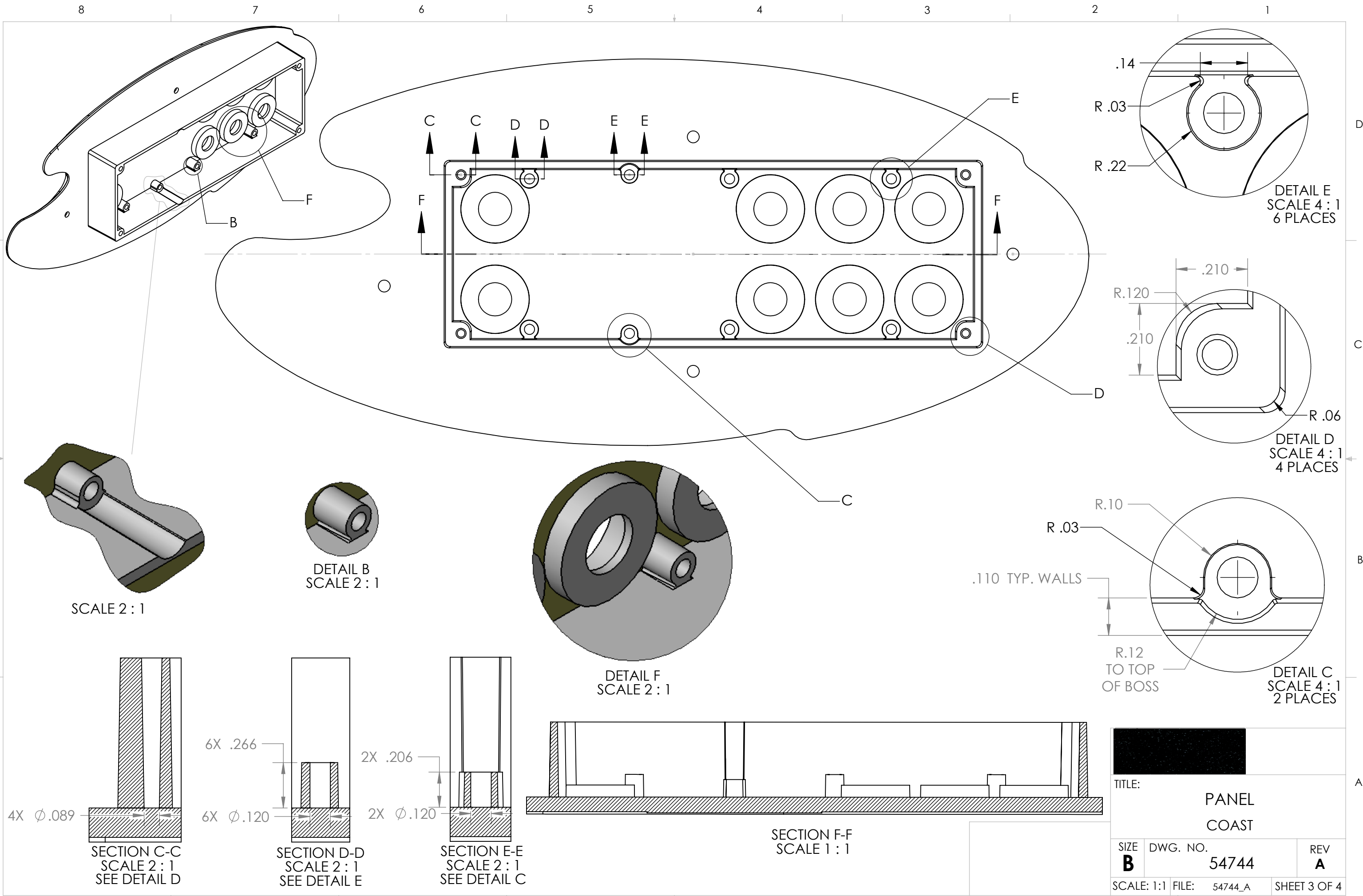


SECTION B-B  
SCALE 2 : 1  
8 PLACES



DETAIL A  
SCALE 2 : 1

TITLE:			PANEL COAST		
SIZE	DWG. NO.	REV			
<b>B</b>	54744	<b>A</b>			
SCALE: 1:1	FILE: 54744_A	SHEET 2 OF 4			



DETAIL E  
SCALE 4 : 1  
6 PLACES

DETAIL D  
SCALE 4 : 1  
4 PLACES

DETAIL C  
SCALE 4 : 1  
2 PLACES

DETAIL B  
SCALE 2 : 1

DETAIL F  
SCALE 2 : 1

SCALE 2 : 1

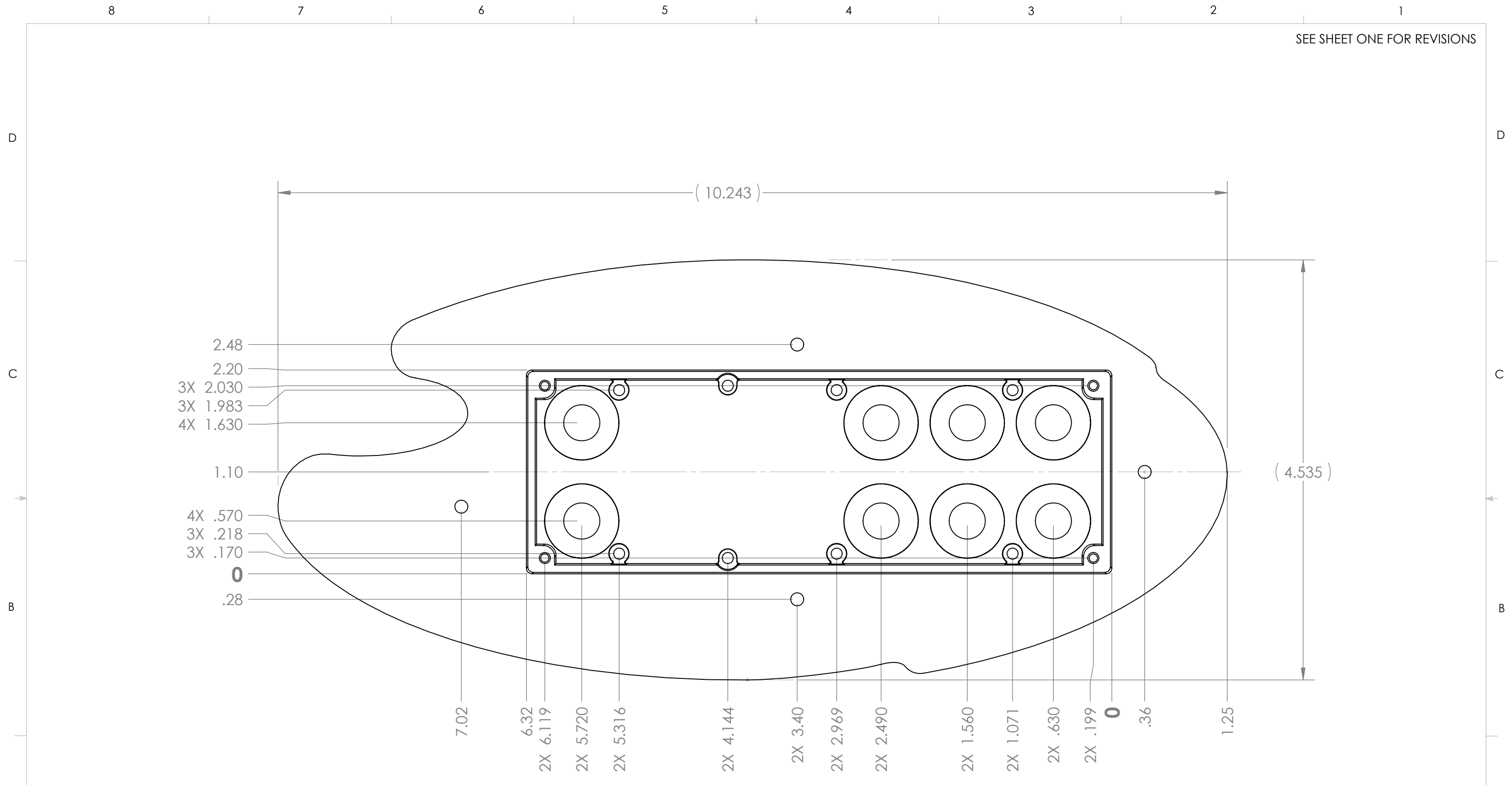
SECTION C-C  
SCALE 2 : 1  
SEE DETAIL D

SECTION D-D  
SCALE 2 : 1  
SEE DETAIL E

SECTION E-E  
SCALE 2 : 1  
SEE DETAIL C

SECTION F-F  
SCALE 1 : 1

TITLE: <b>PANEL COAST</b>		
SIZE <b>B</b>	DWG. NO. <b>54744</b>	REV <b>A</b>
SCALE: 1:1	FILE: 54744_A	SHEET 3 OF 4



TITLE:		
PANEL COAST		
SIZE	DWG. NO.	REV
<b>B</b>	54744	<b>A</b>
SCALE: 1:1	FILE: 54744_A	SHEET 4 OF 4